

SET C

1. Cidade Maravilhosa – Bb (instr)
2. O Balance – Bb
3. Marcha do Cordão Bola preta Eb
4. Indio Quer Apito – Cm (SOLOS)
5. Turma do funil – Fm
6. Oba Bafo do onca – F
7. Mulata lelele – G
8. Saca- Rolah – Am
9. Marcha do remador – Eb
10. Festa do Interior_Bb
11. Mamacê Eu Quero – D
12. Ze perira – Bb (Instrumental)

Spare - Ta-Hi – Cm

Spare - Cachaca – D

Cidade Maravilhosa

Bass

INTRO

Bb

Cm

Measures 1-4: Bass line with eighth notes and triplets. Chords: Bb, Cm.

Measures 5-8: Bass line with eighth notes and triplets. Chords: Eb, Ebm, Bb, Gm, Cm, F7, Bb.

Measures 9-12: Bass line with eighth notes and quarter notes. Chords: Bb, Cm, F7, Bb.

Measures 13-16: Bass line with eighth notes and quarter notes. Chords: Dm, Db^{o7}, Cm, F7, Bb, F7.

Measures 17-20: Bass line with eighth notes and quarter notes. Chords: Bb, Cm, F7, Bb, Bb7.

Measures 21-24: Bass line with eighth notes and quarter notes. Chords: Ebm, Bb, F7, Bb.

Measures 25-28: Bass line with eighth notes and quarter notes. Chords: Bbm, Cm7(b5), F7, Bbm.

Measures 29-32: Bass line with eighth notes and quarter notes. Chords: Ebm, Bbm, Cm7(b5), F7. First ending: Bbm.

Measure 33: Bass line with a quarter note. Chord: Bbm.

O Balance

Bass

8 **A** Bb $F7$ Bb Eb $D7$

8 9 10 11 12

9 Gm $D7$ Gm $D7$ Cm $F7$ Bb

13 14 15 16 17

17 **B** Bb $D7$ Eb Bb

18 19 20 21 22

25 Eb Ebm Dm $G7$ Cm $F7$ Bb


23 24 25 26 27 28

Marcha do Cordao do Bola Preta

Bass

E_b

1. **B_b7**



9

2. **NC.**

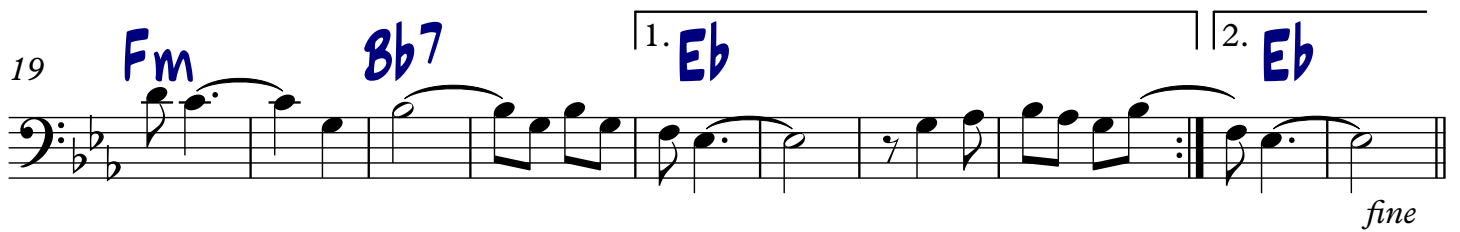


11 **A** **E_b** **C⁷** **F_m**



19 **F_m** **B_b7** 1. **E_b** 2. **E_b**

fine



29 **B** **A_b** **E_b**



37 **F_m** **B_b7** **E_b** **NC.** **§**



Indio Quer Apito

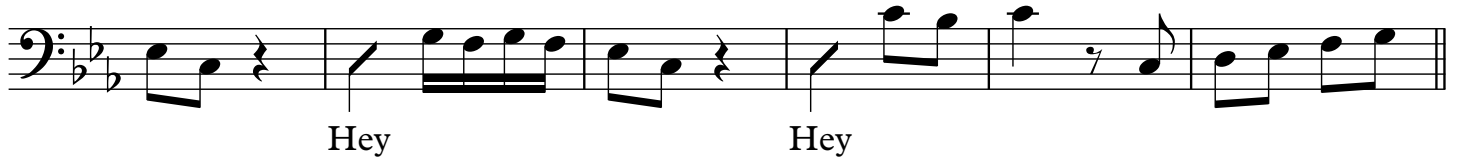
Haroldo Lobo e Milton de Oliveira

Bass

Cm Optional Intro or Horn thingy.



9



15 **A** Cm Bb Cm G7 Cm



23 **B** Cm Bb Cm G7 Cm



31 Cm Bb Cm G7 Cm



Sopra que Sara / Pega no Piston - Carnaval de rua de Belo Horizonte



Bass

Turma do Funil

Marchinha

A Fm C7 Fm Eb Ab

10 C7 Fm C7 1. Fm

18 2. Fm

20 **B** C7 Fm C7 Gb7 F7

28 Bbm Fm C7 Fm

Bass

MULAATA IE IE IE

JOAO ROBERTO KELLY

INTRO

Measures 1-8: Intro. Bass line in G major, 2/4 time. Includes triplet markings.

9 **A** **G**

Measures 9-13: Section A, measure 9. Chord: G.

14 **G** **D7** **C** **D7** **G** **Em7**

Measures 14-19: Chords: G, D7, C, D7, G, Em7.

22 **A9** **D13** **G** **G**

Measures 22-27: Chords: A9, D13, G, G. Includes first and second endings.

28 **B** **C** **G**

Measures 28-35: Section B, measure 28. Chords: C, G.

36 **G7** **C** **A9** **D7**

Measures 36-41: Chords: G7, C, A9, D7.

Bass

Saca-rolha

8 **Dm** **Am**

9 **E7**

15 1. **Am** breque 2. **Am**

21 **Dm** **Am**

29 **E7** **Am** breque....

Marcha do Remador

Bass

A. Almeida e O. Magalhaes

Chords: G, C, G, Em

7 Am D7 1. G D7 2. G

13 Am G

21 Am G D7

31 G_{m7} C_7 F_7

ta va a vi da in tei ra_e ter__ na noi__ te sem pre_a pri mei ra fes

34 C_{m7} F_7 Bb_6 D_7

__ ta do in te ri or ar di a a que la fo guei ra que me es quen

37 G_{m7} C_7 F_7 C_{m7} F_7

ta va a vi da in tei ra_e ter__ na noi__ te sem pre_a pri mei ra fes__ ta do in te ri or

D.S. al Fine

Base

Ta-hi

8

Fm Cm

10

G7 Cm

18

Cm

20

Cm G7 G7 Cm

28

Fm Cm G7 Cm

36

Cm

D.S.

CACHACA

Bass

Pinheiro/de Castro/lobato

INTRO **G G#° D/A D A7 D**

11 **A D Em B7**

19 **Em A7**

28 **B D Em B7**

36 **Em A7**

44 **D7 G**

52 **G G#° D/A D A7 D**